



a chapter of the ARS

The Yak

Volume 11

Number 6

June 1998

Fraser South Rhododendron Society

meetings held every third Wednesday, 8.00 pm St. Andrews Anglican Church Hall Langley

Executive, 1998

President: Les Clay 530 5188
Past Pres.: Bobby Ogdon 583 7434
Vice Pres.: Don Selman 533 4980
Secret.: Janet Warner 857 0788
Treas.: John Warner 857 0788
Directors: three years

Colleen Forster 534 1840

two year -

Michael Neyedli 931 1199

one year -

Trevor Badminton 856 0046

Committees:

Programme - Trev. Badminton
Ways and Means - Diane Scott
Library - Pat Dahl and Jan. Warner

Warner

Kitchen, coffee and calories -
Melba Johnson, Lillian Emerson

Emerson

Hostess and Greeter - Phil Anderson

Security - John Anderson
Membership - Vicki Neyedli
Newsletter editor -

M. L. Trembath - 856 7261

fax. - 856 7261

e mail -

ve7hv@planeteer.com



- June 17 - FSRS Annual Picnic at the Rhodo Ranch

6.00 p.m.

map and information - Page 4

Remember the

REMARKABLE RAFFLE

where "everyone wins something" will be included in the festivities

- * October 2 - 4
Western Regional Conference
Florence, Oregon

Reminder - a new edition of the R&A Newsletter is on the net, as of June 1, 1998

Address:

<http://members.aol.com/RandANews/news.html>



A very warm welcome to the following new members

Vera Starka of Langley
Karen Linton and Larry Morton, of Langley

Also welcome back Rob and Jennifer Bishop as associate members from PARS

Inside

Reports & News.....	2
Show results.....	2 & 3
Picnic news & MAP.....	4
A Rhododendron Primer....	5
Rootstalk.....	6
Looking for and aft	6

May Meeting

Did every one have fun ? I hope so. We again had over 100 entries in our many classes, and will consider adding classes for next year. It is gratifying to see so many of you be part of the fun.

We did manage to honour Lillian Emerson - with the Ella Crabb Memorial Award, and Melba Johnson With the Harold Johnson Award

Perhaps we may be able to catch up with other worthies at the picnic.

Last month I assured my readers (if any) that they would be expected to bring chairs to the picnic, if they wished to sit. Now Trev assures us that this will not be necessary - and you will remember that your are NOT required to bring cutlery or plates and drinking utensils. For those of you not familiar with the RHODO RANCH a map has been supplied by Trev, and will be found on Page 4 of this Newsletter

Have a happy summer everyone.
The Yak will resume in September



Results From Fraser South's Famous, Fabulous, Flower Show And the Winners Are:

Class 1 - Best Red
Arnim Roeske -
Black Magic

Class 2 - Best White
Vern Finley
Sappho

Class 3 - Best Pink
Keely Ogdon
Anna

Class 4 - Best Yellow
Vern Finley
Idealist x
lactem

Class 5 - Best Mauve
Bobby Ogdon
Olin O. Dobbs

Class 6 - Best Orange
Bobby Ogdon
xanthocodon

Class 7 - Best Bi-
colour
David Sellers
Lem's Monarch

Class 8 - Best
Blotched Truss
Don Selman
Chapeau

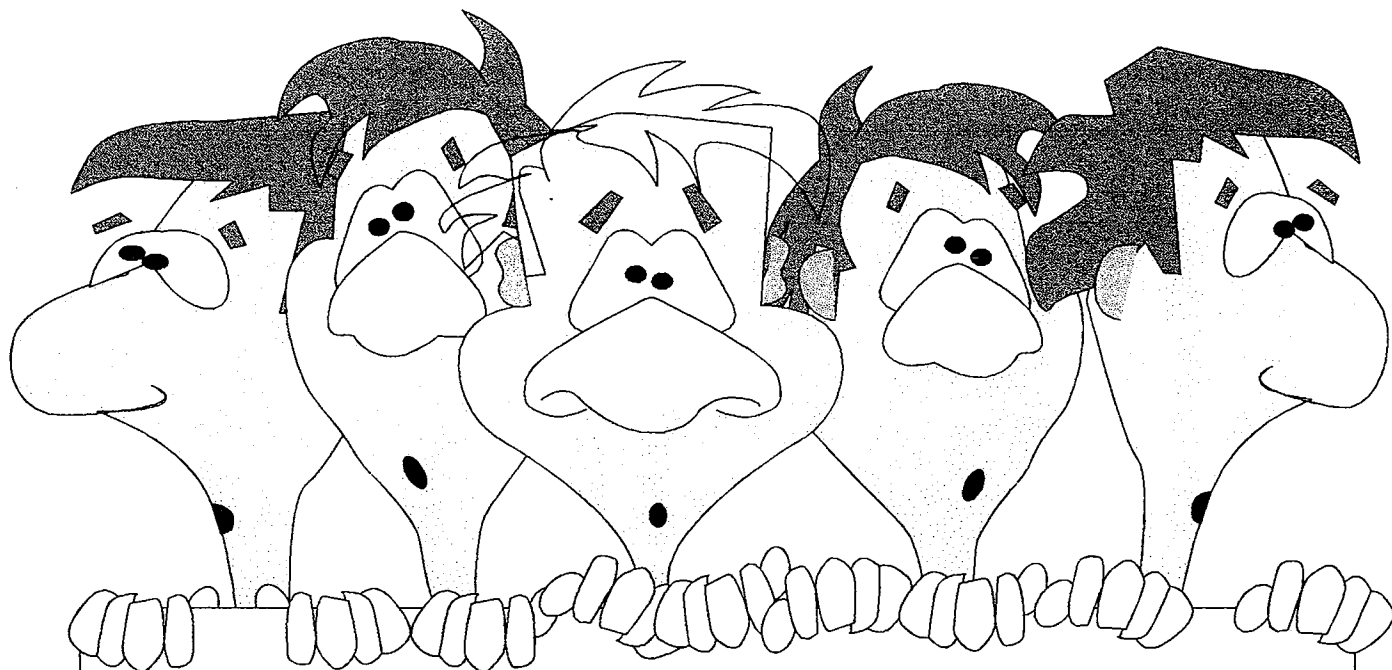
Class 9 - Most Flac-
cid Truss
Bobby Ogdon
Thor

Class 10 - Most Lurid
Melba Johnson
Ring of Fire

Class 11 - Best Last
Year's Truss
Mike Trembath
R. discolor

Class 12 - Most Et-
elegantly Weevil
Notched
Vern Finley
unnamed

* see page 4 re Hi. Ag.
Trophy award



Most Illustrious Trophy Winners

(n.b. the adjectival phrase
"Most Illustrious" refers to
" Trophy ")

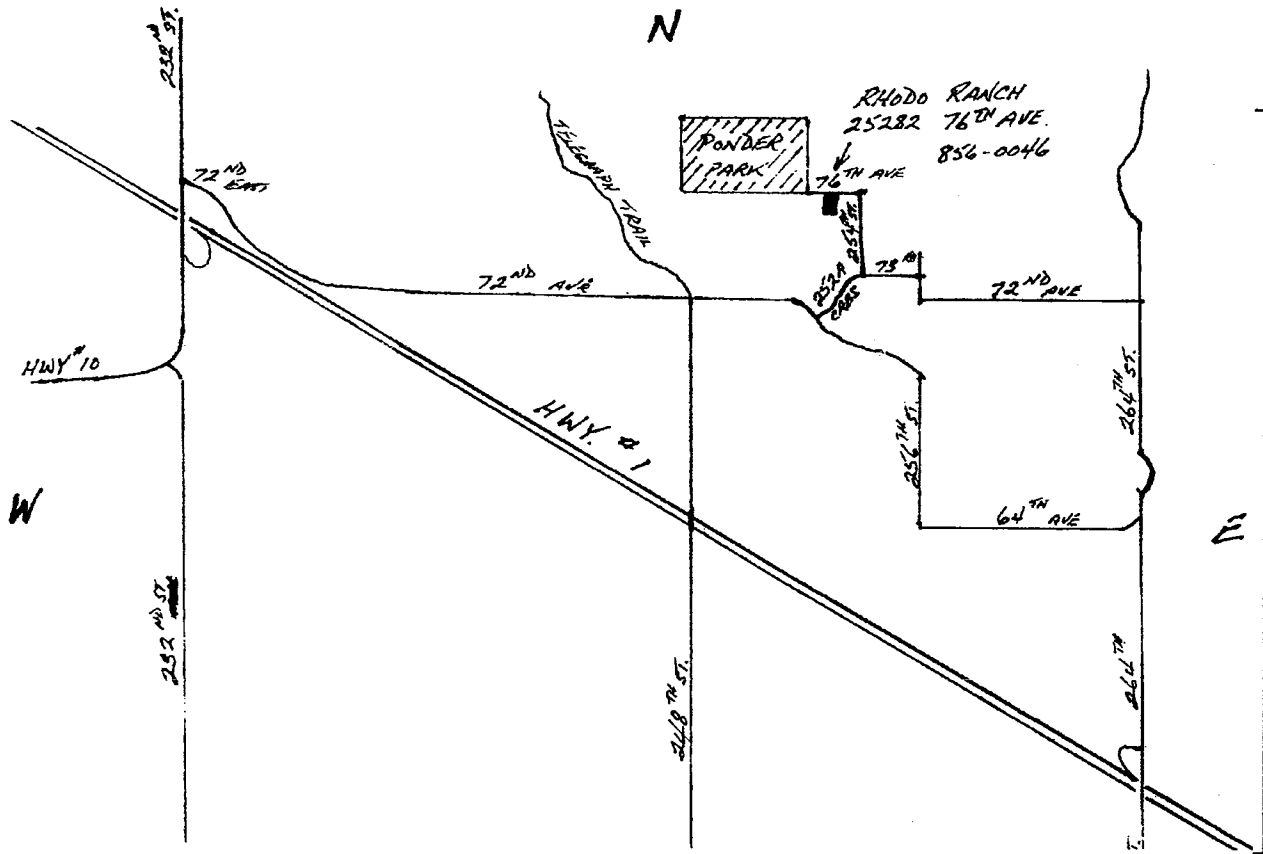
Most Elegantly Weevil Notched: Vern Finley

Best Flaccid Truss : Bobby Ogdon

Best Last Year's Truss : Mike Trembath

High Ag : Vern Finley

Here is your directional map. Any problems - phone Badminton's at 856 0046.
(map courtesy of Trev. Badminton)



You are invited for 6.00 p.m. Remember - you do not need to bring chairs, cutlery or dishes - just your contributions to the food table along with a healthy appetite for same, and some loonies or twonies to be part of our

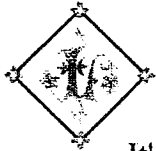
REMARKABLE RAFFLE

*

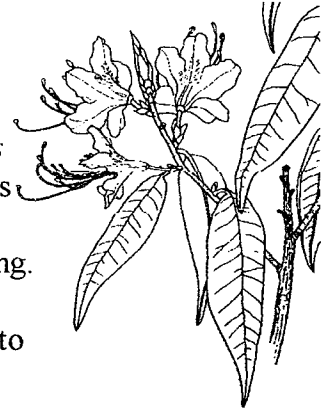
For those of you who may have noticed that Bobby Ogdon and Vern Finley each won the same number of classes - and who might have wondered then how come the Hi-Ag Trophy went to Vern - let me assure you that those dependable gnomes who kept track of these things, faithfully counted votes - and Vern came up with a few more overall !!



A Rhododendron Primer



is for *R. lutescens* (Subgenus rhododendron, section rhododendron, subsection triflora)



It's early June, and at the moment, my own *R. lutescens* has lovely bronzy-red new foliage that is making a nice show. It has the added feature of having some leaves turn red in the fall. But *R. lutescens* is especially noted for pale yellow flowers in early spring. When in bloom the plant can be entirely covered with flowers. My own plant starts with a greenish-yellow flower that gradually turns to bright yellow as the flowers mature. The colour range listed for *R. lutescens* is from soft primrose to bright, clear yellow.

R. lutescens can reach 2 metres in height, and it has an open, upright habit. Because it does bloom early, it does best in sheltered locations where the flowers can have some protection from late frosts. This year, with the heavy frosts we received in early April, I lost most of the flowers on my own *lutescens*. Last year, however, the flower display was excellent

Native to Szechwan and Yunnan, it is found growing from about the 1000 to 3000 meter level. According to Peter Cox, in his book Dwarf Rhododendrons, *R. lutescens* is tolerant of some lime in the soil. I tend to agree with this because my *R. lutescens* is doing well in a soil with a pH 6.2, generally considered too high for some rhododendrons.

Norma Senn



is for *Ladybird*

discolor x Corona.

A de Rothschild hybrid which won an. A.M.in 1933

Said to be hardy to -5 degrees F. and rated 3/3-4

A clean upright, well branched plant with dark green, leathery oblong leaves to 8" held for two years.

Twelve to fifteen large florets in large, round trusses open bright pink, and fade to a good light pink. Fragrant and frilled, the florets are lightly speckled on the top lobe, with slight yellowing in the throat.

This late May, early June bloomer is a little difficult to propagate but is a lovely addition to the garden to extend the blooming season.

Vern Finley

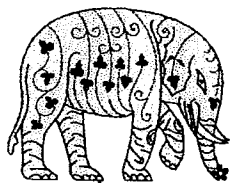
ROOTSTALK

BY INDUMENTUM

Most rhododendron foliage is remarkably sun tolerant but the shallow root systems are not. If the foliage starts to shrivel in the sun it is probably because the rootball is dry and the plant is suffering from extreme thirst. This is why well mulched north facing slopes are preferred for rhododendron plantings as the rootballs are angled away from the direct sunlight. Large leaved rhododendrons transpire more water than rhodos with small leaves simply because of the larger leaf area. Large leaved rhodos therefore prefer shady conditions which will reduce the evapo-transpiration rate from both the leaves and the rootball and cut down on overall water consumption. Nevertheless, because it is more important to shade the rootball than the leaves, a large rhododendron often does not need to be planted near a tree if there is sufficient rhododendron foliage to provide its own shade.

There is another reason for planting shade trees, however and that is to protect the blooms from wilting in the sun. At the Fraser South Beer Bottle Truss show, hot dry weather a few days before eliminated many trusses from contention. It was surprising that there were not more entries in the Most Flaccid category! I asked Vern Finley if one of the reasons she was so successful at truss shows was because the tall shade trees in her garden protect the blooms. She agreed and noted that their garden is often five degrees cooler on sunny days.

It was great to see the high level of participation in the Beer Bottle Truss Show and everybody had a lot of fun. Maybe next year we should hold the event at the April meeting so we get a different palette of trusses and more species entered. In the third week of April, however, the yak crosses are only just starting to come out so another possibility would be to hold the May meeting in the first week of May. We could alternate the timing from year to year so that those who do not have a lot of late flowering rhodos can look forward to bringing in their huge Loderi trusses and other late April flowers.



Having promised that we would do some "remembering" about the "early days of rhododendron growing in BC" - I now find time, and **Yak** room have run out for this season. I have been trying to fix a "time-line" in my own mind. It would appear to start with George Fraser on Vancouver Island. Also on the Island, came the Griegs of Royston, but meanwhile, Dr. McKee was growing rhododendrons from seed obtained from friends he met in the U.K. during World War I. The famous Layritz Nursery - also on Vancouver Island - was importing rhododendrons from Exbury as early as 1923. We will, I hope, meet some of these early growers, collectors and enthusiasts through articles I hope to publish in **The Yak** and written by those who knew them.